



Macro Dating Window 1920-1926



**YANKEES
Replaces
NEW YORK
On Road Jerseys
1927-1930**

**Numbers Added
To Rear of Jerseys
1929**

Ruth with Yankees

1920 1921 1922 1923 1924 1925 1926 1927 1928 1929

PLATE 1

Babe Ruth Yankees: 1920-1934

New York Front: 1920-1926; 1931-1934

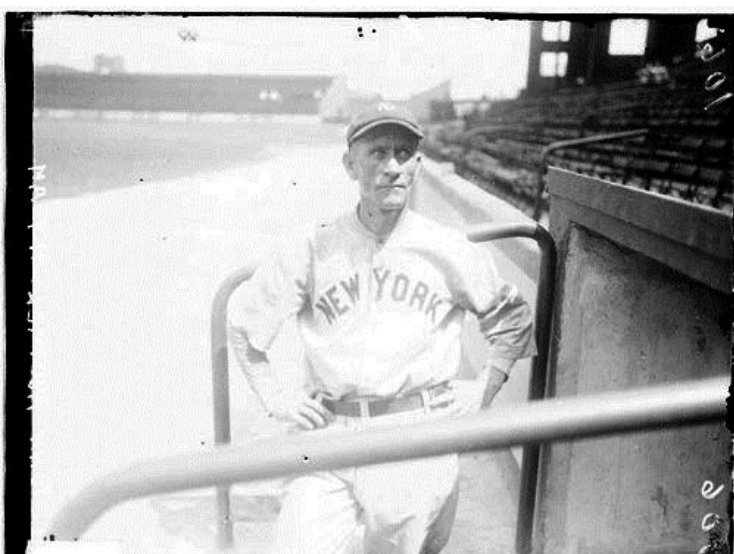
Numbers on Back: 1929-1934

Spalding Tag: c 1915-1928



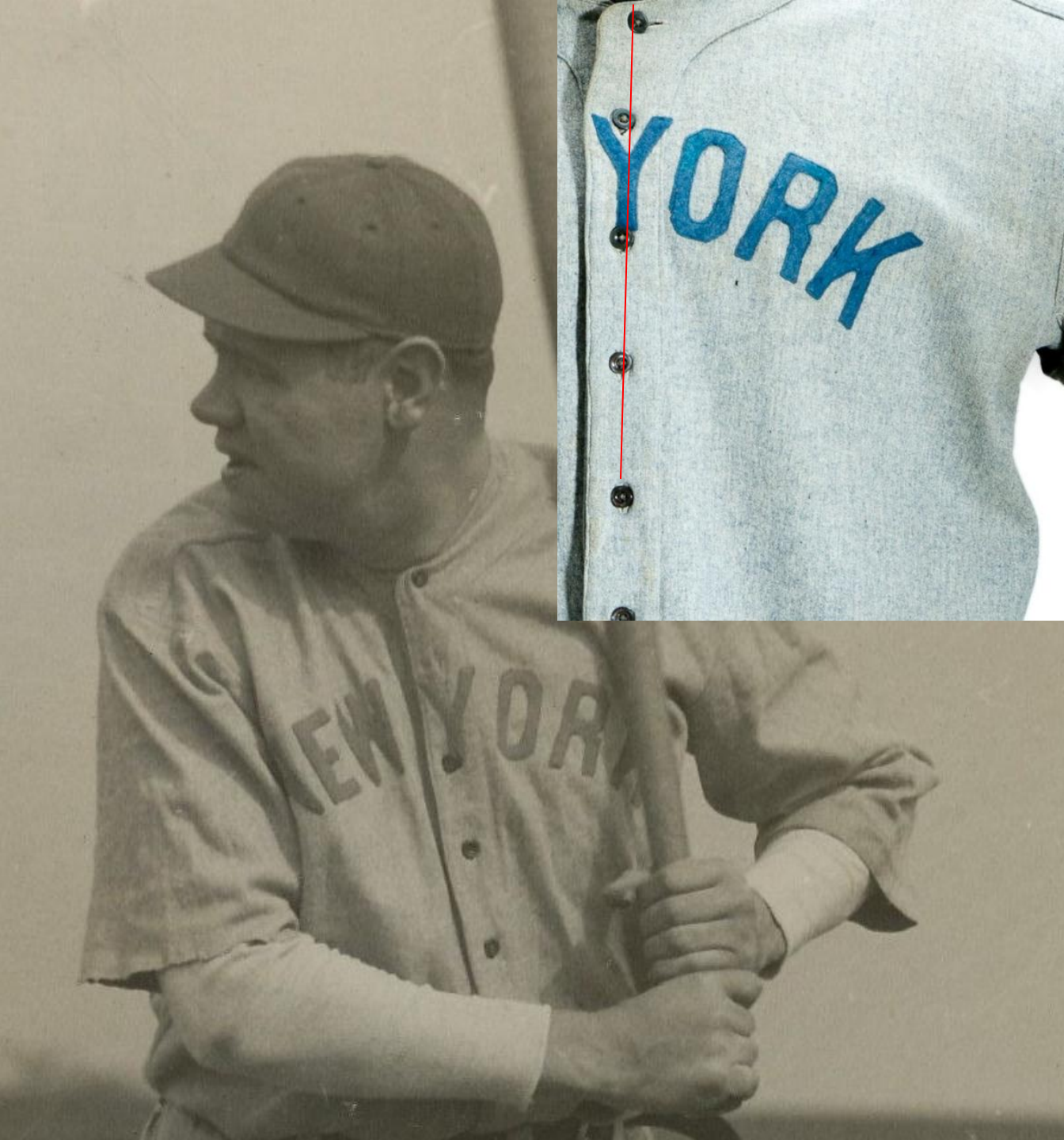
1918 Yankees WW I Armbands

PLATE 2



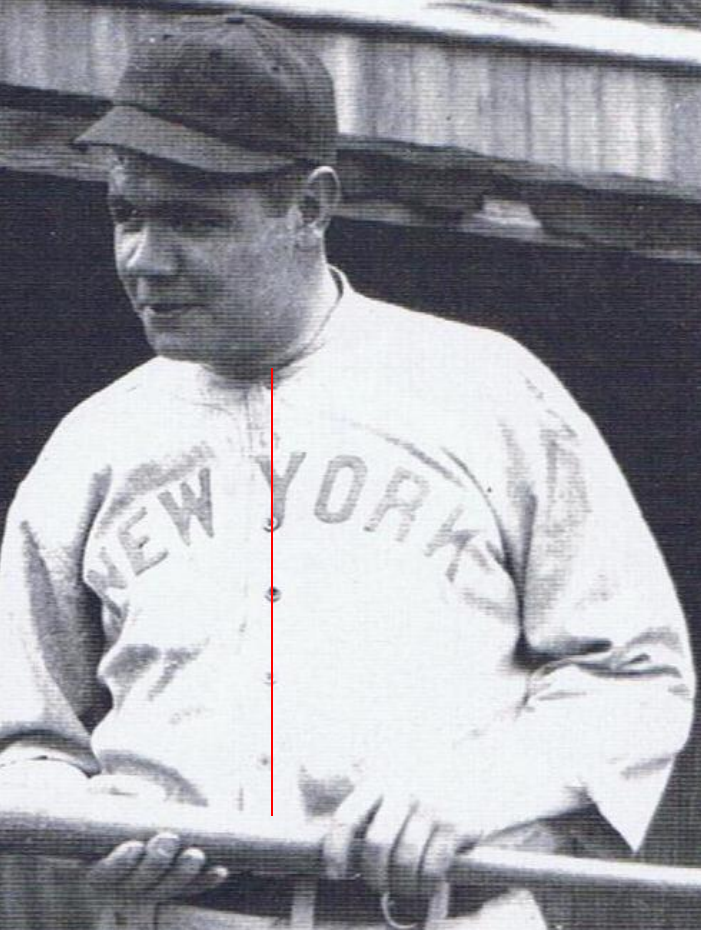
1919 Yankees

PLATE 3



1920

PLATE 4



Spring Training 1920





September 1920

PLATE 6

1920



Ray Chapman
Arm Band

Chapman
Dies 17 Aug 1920

PLATE 7

8 Aug 1920



PLATE 8



1920

PLATE 9



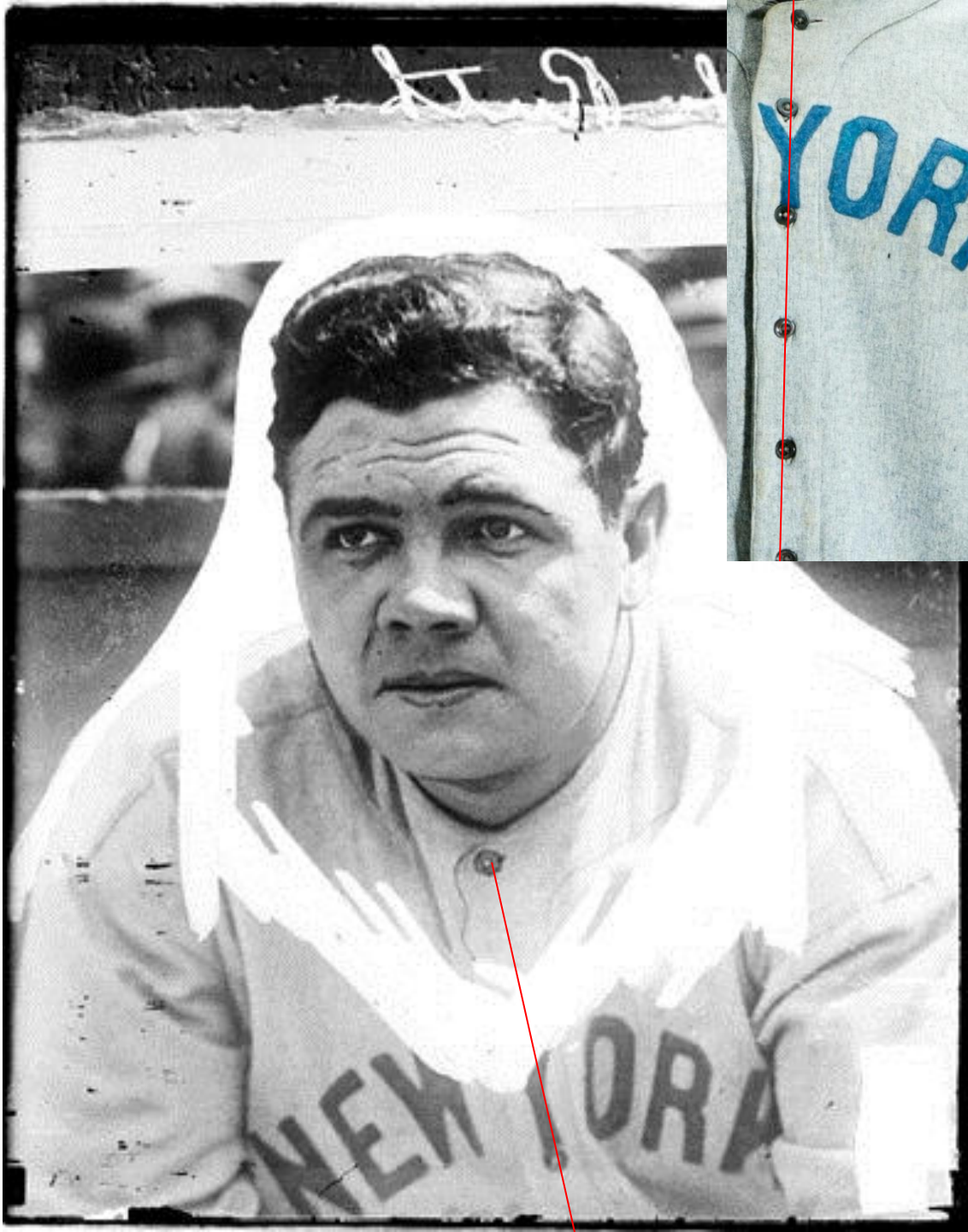
Babe Ruth and Eddie Cicotte. Photo has to be from 1920 as in 1919 Ruth was with the Red Sox. In 1921 Cicotte was out of Major League Baseball



PLATE 10

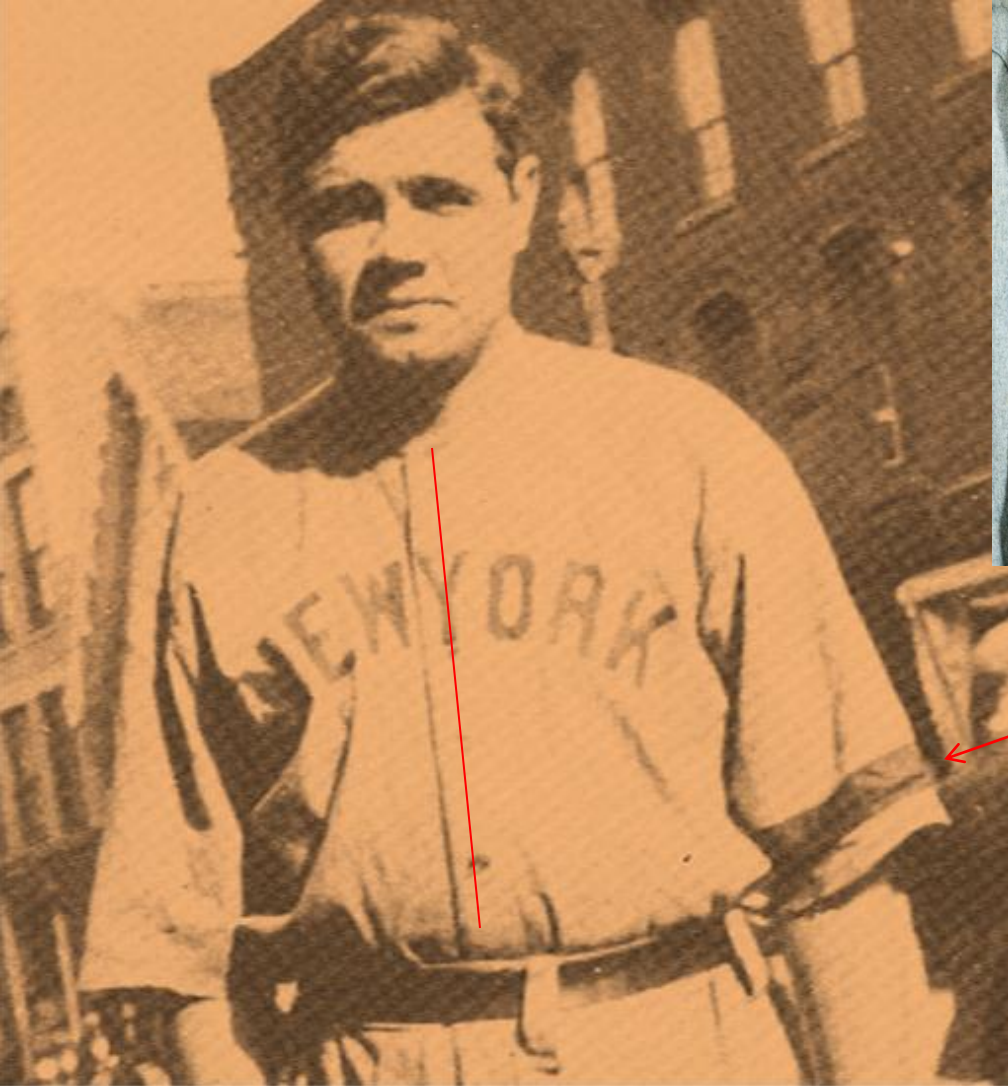


Babe Ruth and Joe Jackson. Photo has to be from 1920 as in 1919 Ruth was with the Red Sox. In 1921 Jackson was out of Major League Baseball



Comiskey Park 1920

PLATE 11



Ray Chapman
Arm Band

PLATE 12

Post 1920 Season Barn-Storming Tour



18 Nov 1921



1921

Yankees at Comiskey Park 1921

18-21 May

8-11 July

7-10 August

17-19 August

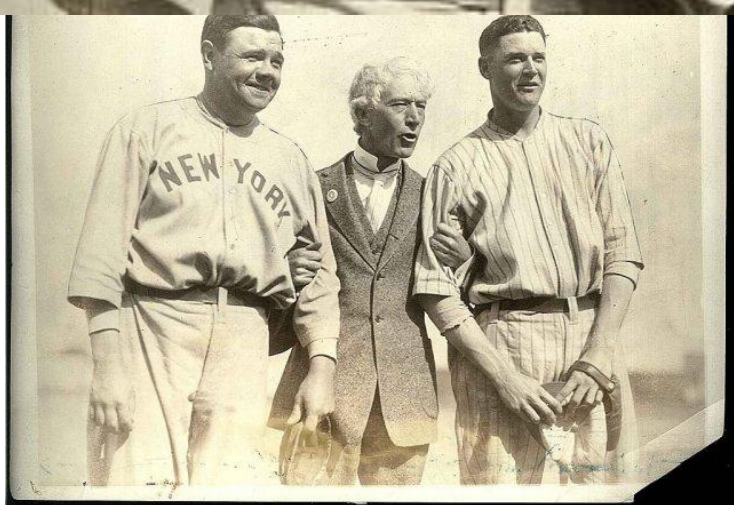
13-14 September

**Not the Same Jersey
Based on Sleeve Length and Dates**

PLATE 13



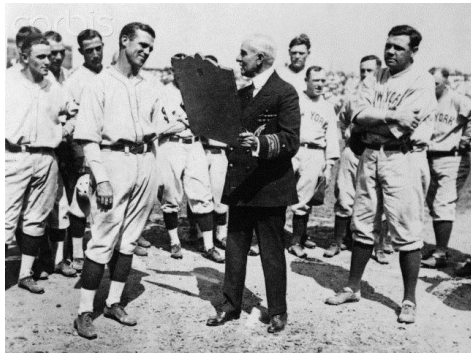
PLATE 14



**Referenced as a Becket Type 1
1921 Babe Ruth Photograph**



PLATE 15



10 June 1922

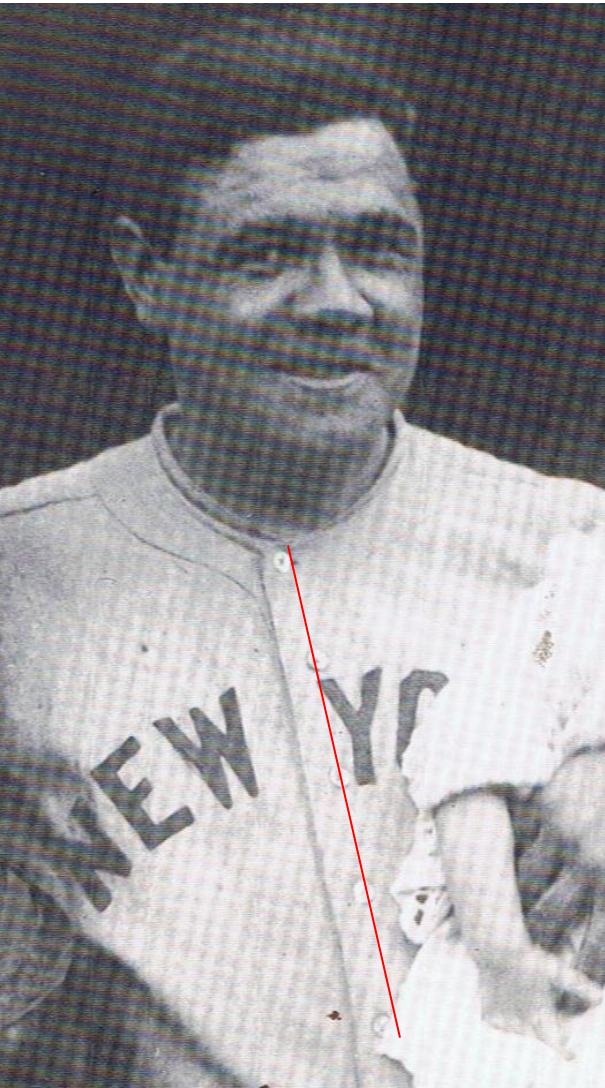
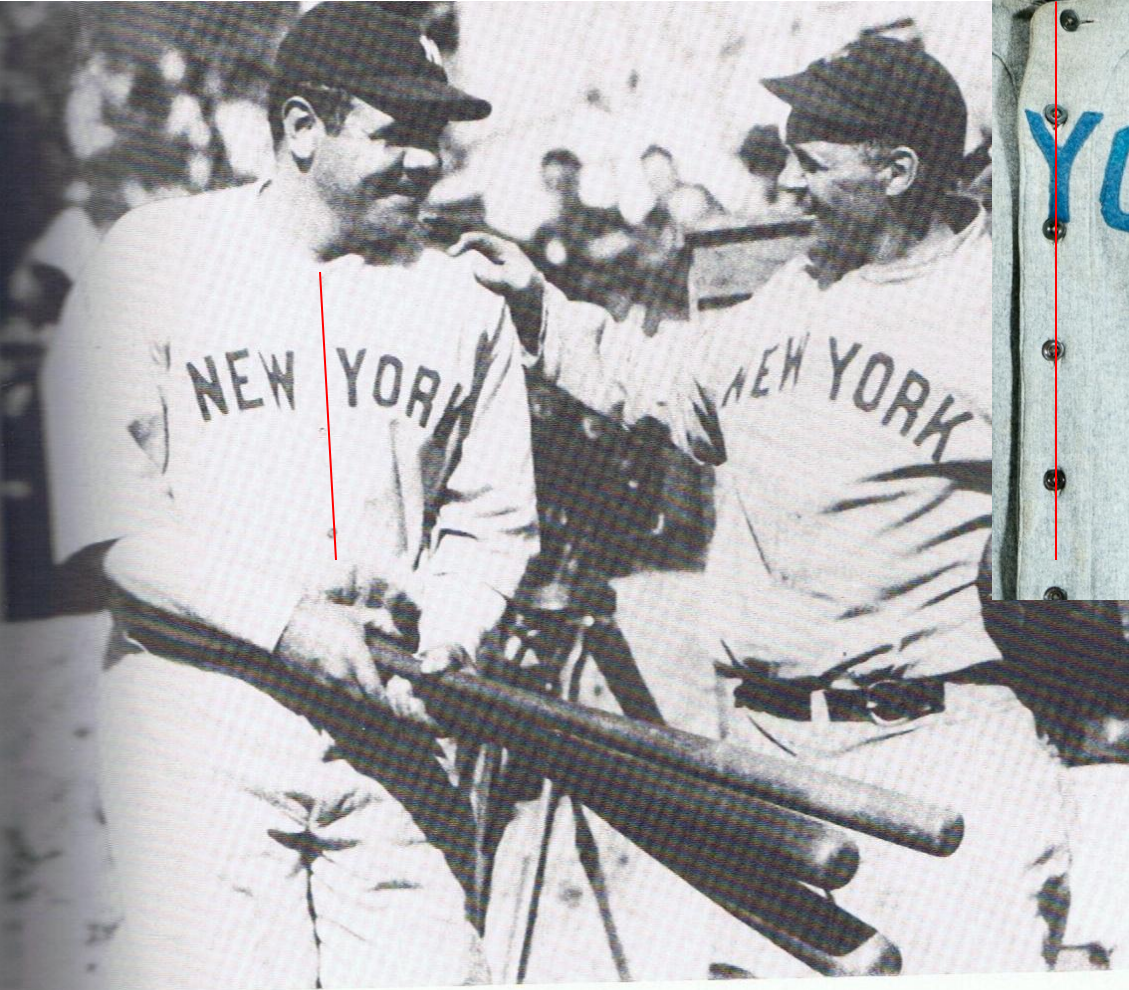


PLATE 16



Late Season 1921 or early Season 1922



1922

Ruth and Wally Schang in 1922. A hard-hitting catcher, Schang played on the Yankees for five years (1921–1925) and in the big leagues for nineteen (1913–1931).

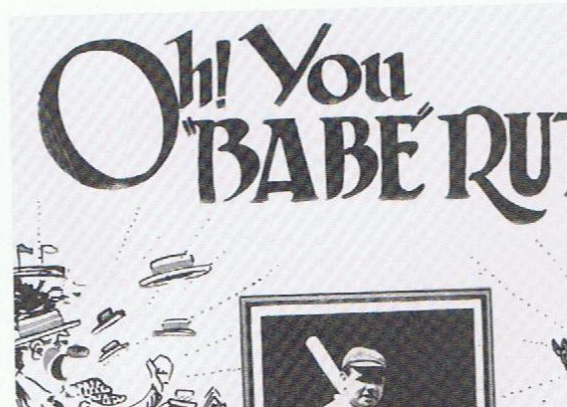


PLATE 17



PLATE 18



1922 World Series



**Joe Bush
Chicago
1922**



PLATE 19



PLATE 20

16 July 1923





PLATE 21

1923



1924

PLATE 22



PLATE 23



1924

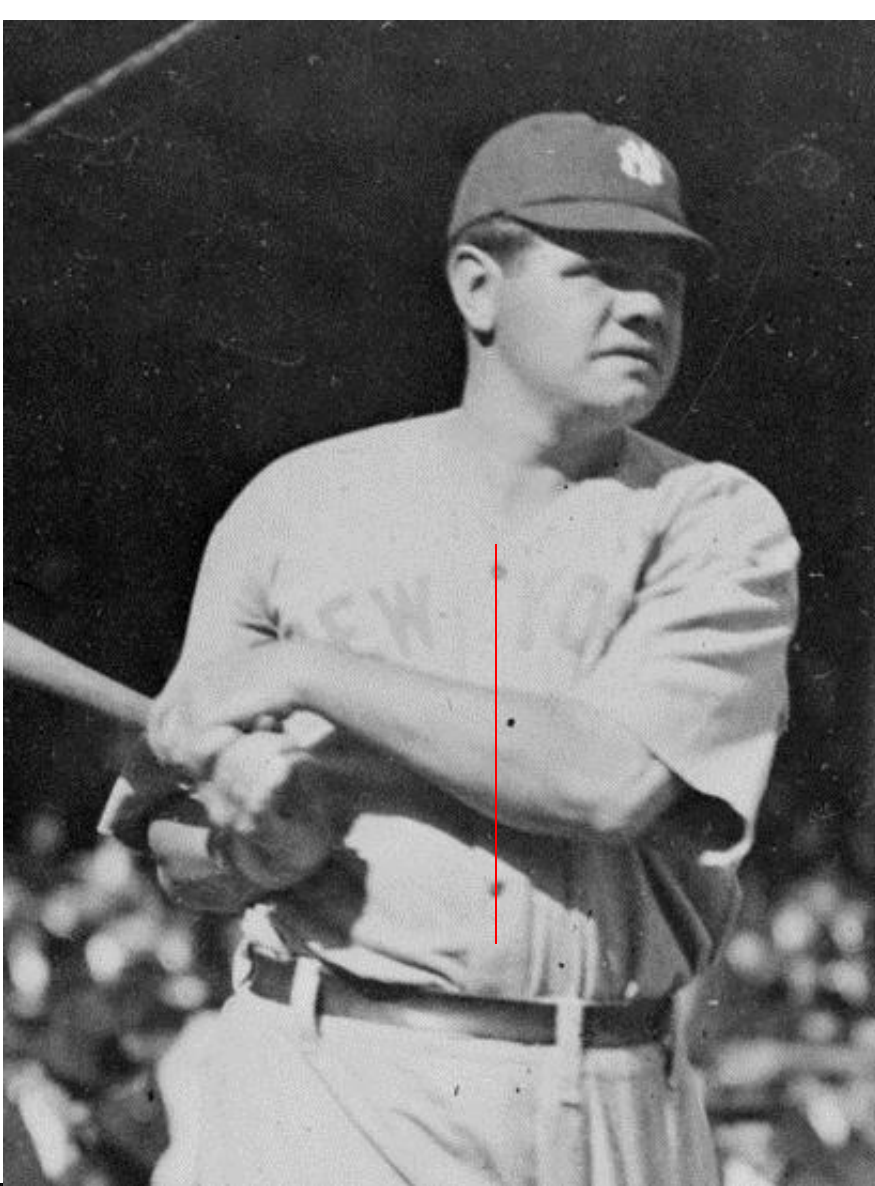
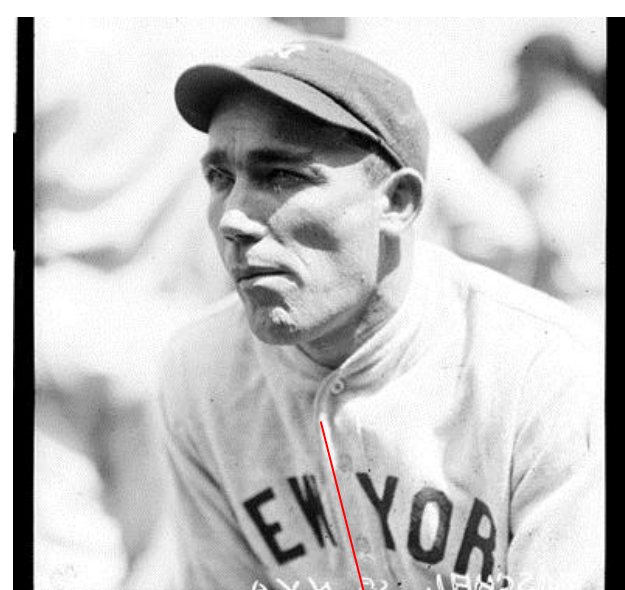
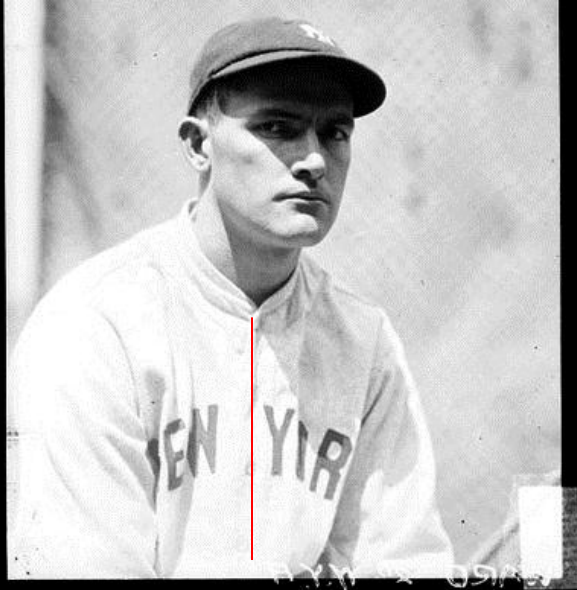
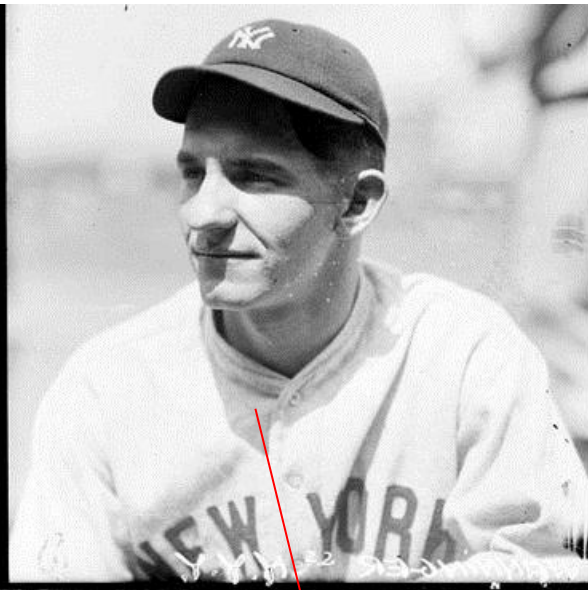


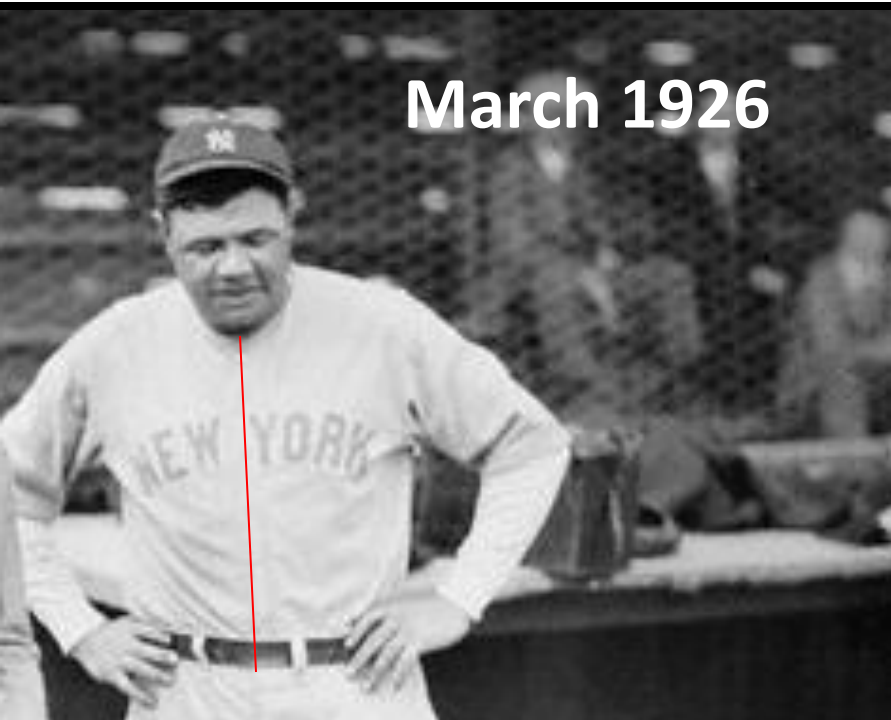
PLATE 24



**Boston Public Library
27 Sept 1925**



1925 Yankees in Cominsky Park, Chicago



March 1926

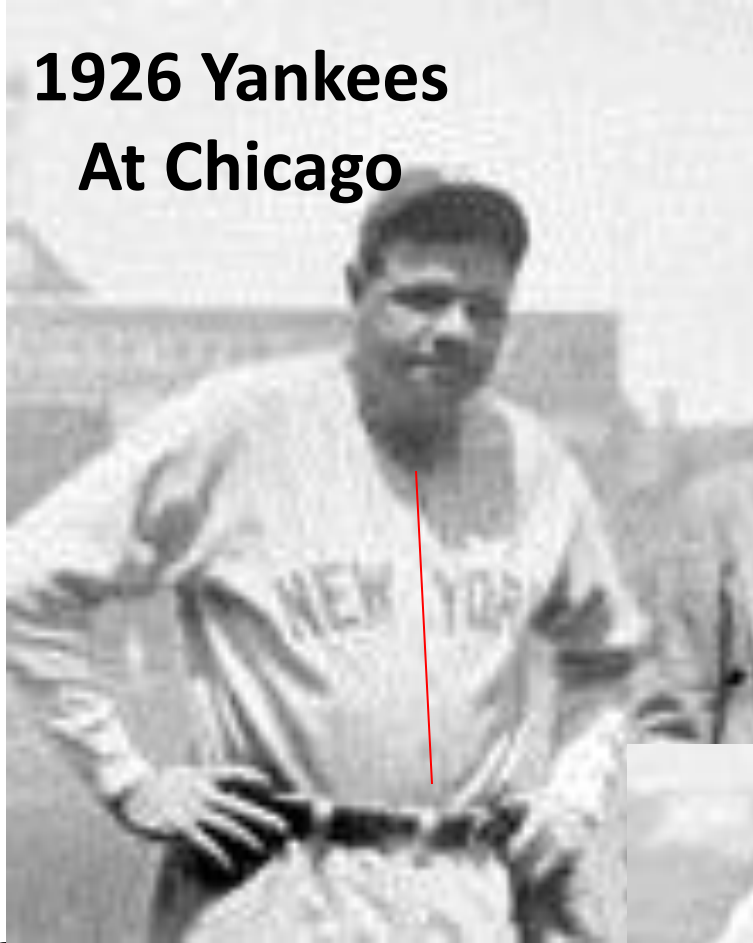
**Spring Training Uniforms
That Would Have Been Worn
During the 1925 Season**

PLATE 25



1926 Yankees At Chicago

PLATE 26



1926 Yankees At Chicago



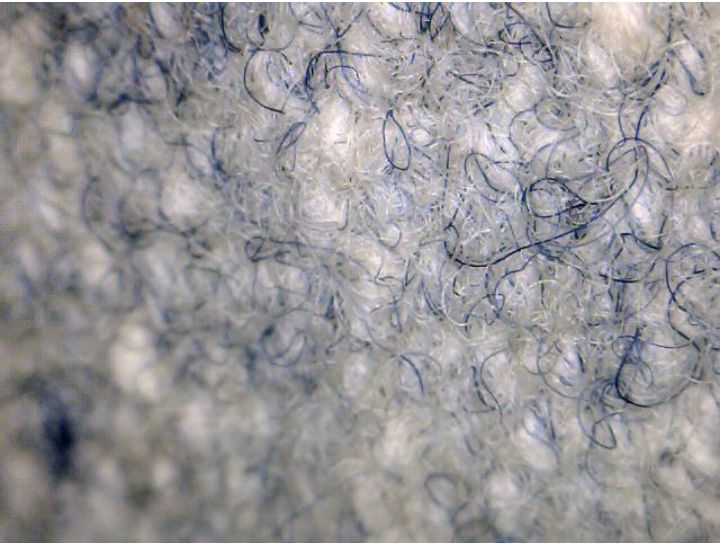


PLATE 27



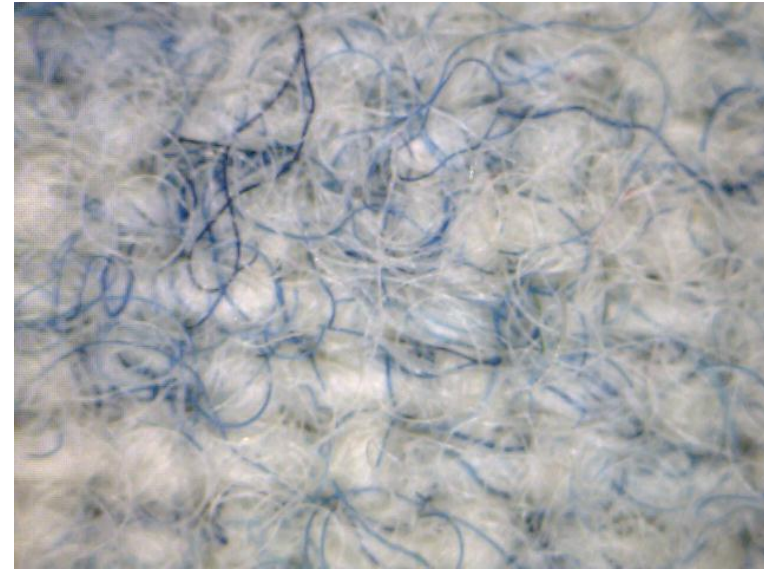
8 October 1926

Fabric Comparative Analysis



Offered Jersey

PLATE 28

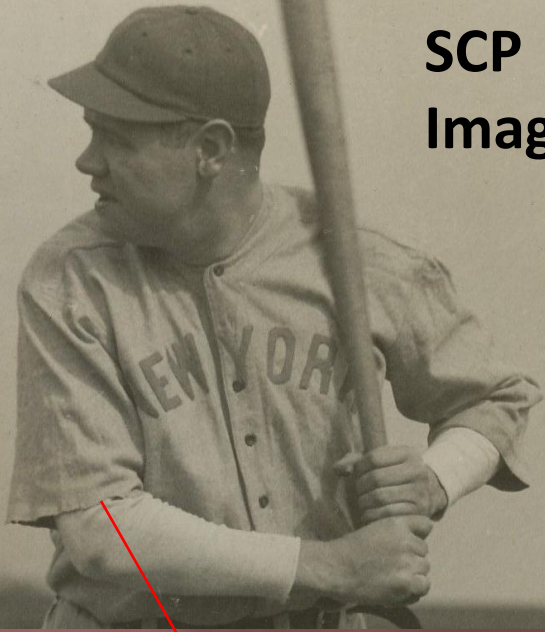


Period Non- Professional Grade Spalding Product



**Fabric weave is becomes more open the farther
you go down in quality.**

**1920
SCP
Image**



**This Sleeve Appears
To Have Been Trimmed**

Irregular Fabric Line

Rough Un-Hemmed Edges



1920
SCP
Image

This Sleeve Appears To Have Been Trimmed

- Rough Edges
- Irregular Fabric Line



PLATE 30



18 March 1921

**Corbis
U136453INP**

**This Sleeve Appears
To Have Been Trimmed**

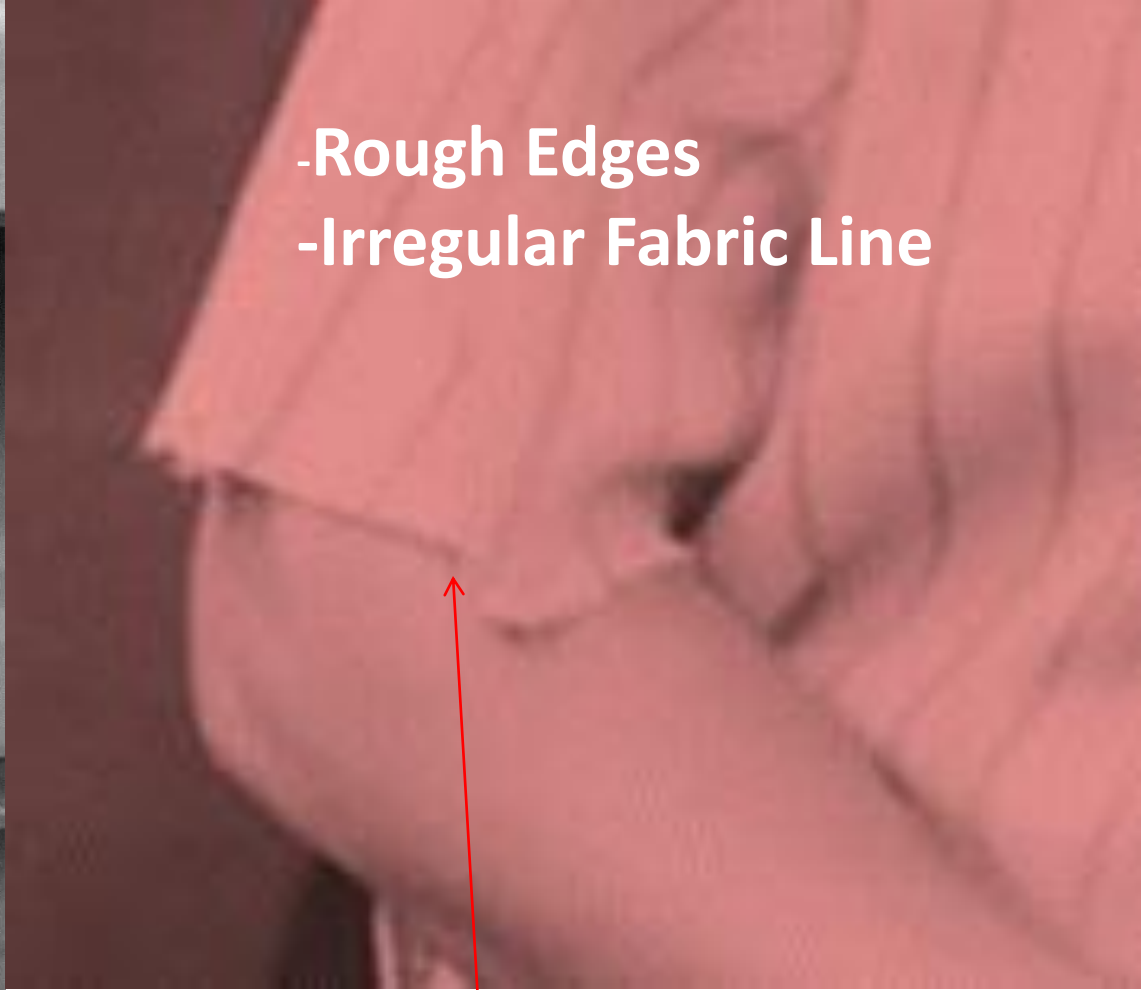
-Irregular Fabric Line

**Spring Training Uniforms
That Would Have Been Worn
During the 1920 Season**

PLATE 31



1921
Base on
Cap Style



-Rough Edges
-Irregular Fabric Line

**This Sleeve Appears
To Have Been Trimmed**

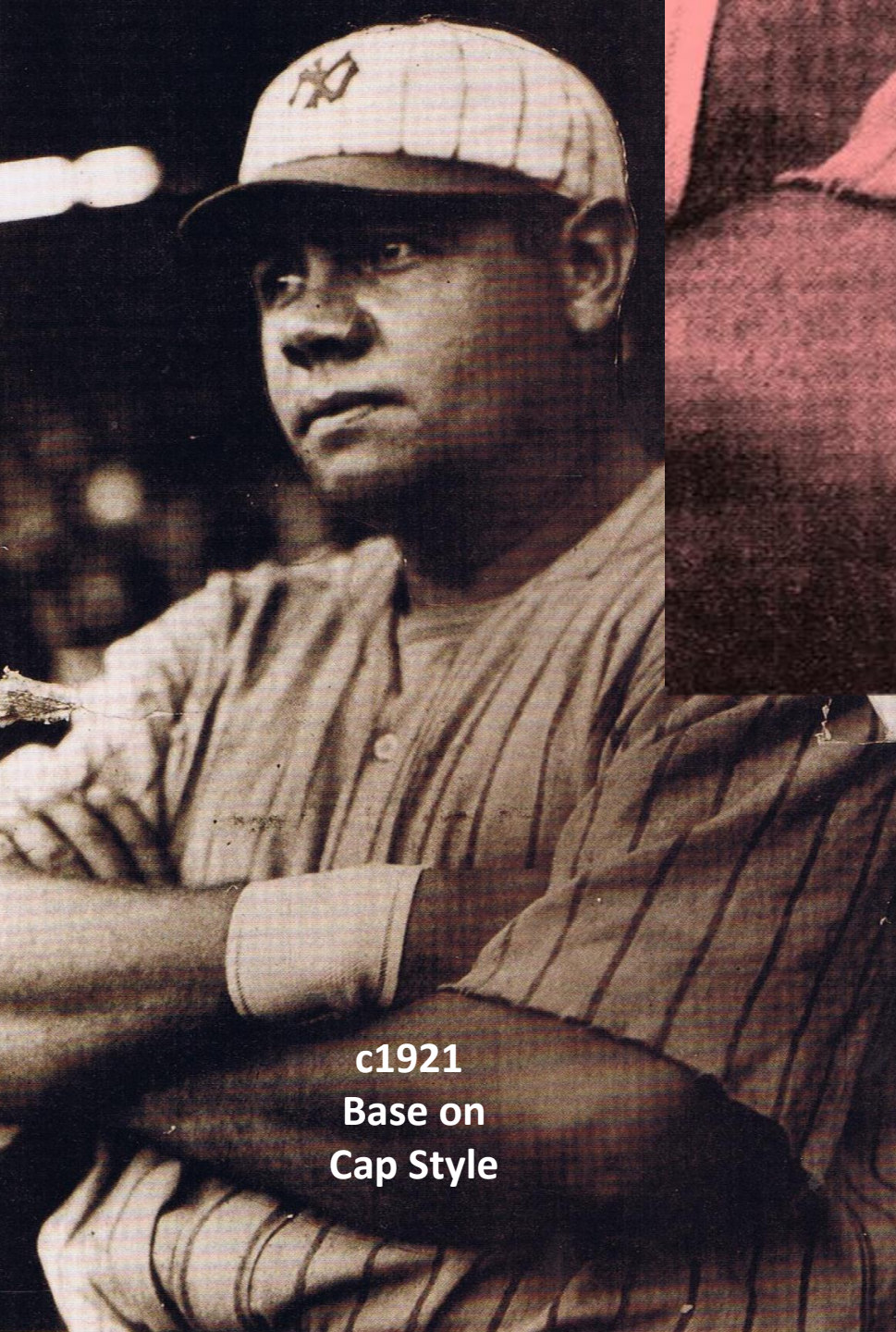


c1921
Base on
Cap Style

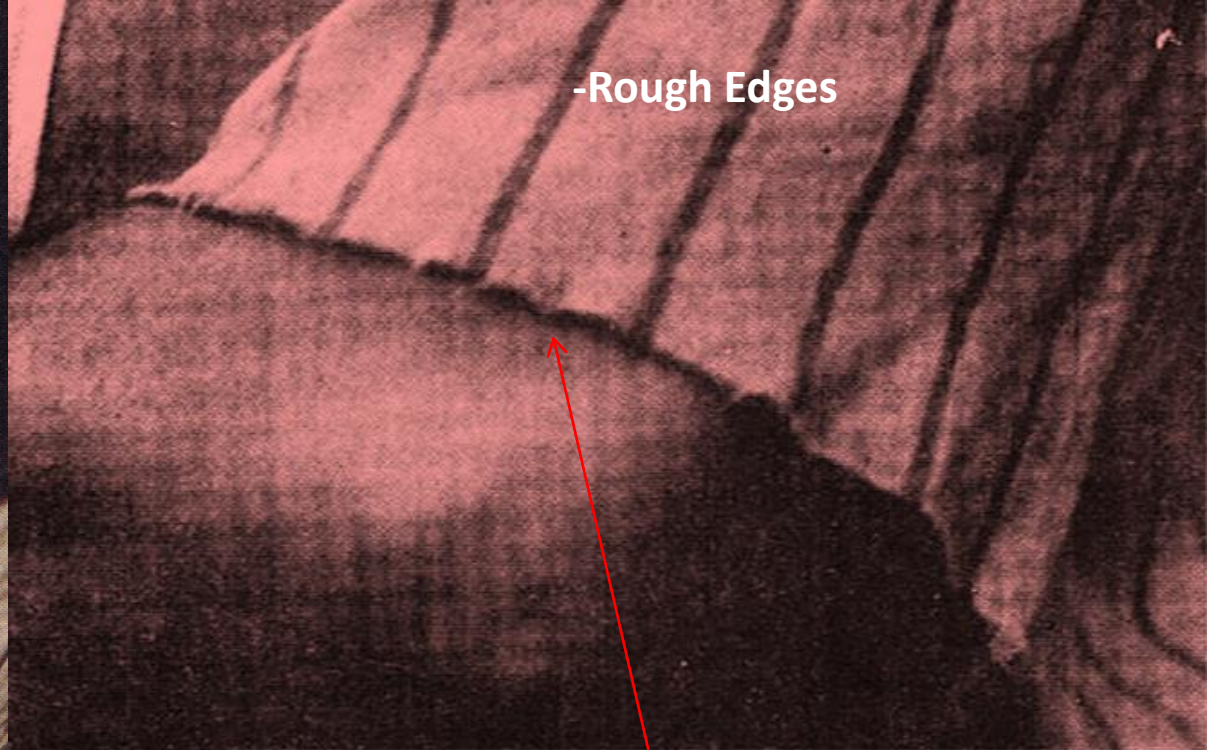


-Rough Edges

**This Sleeve Appears
To Have Been Trimmed**



c1921
Base on
Cap Style



-Rough Edges



**This Sleeve Appears
To Have Been Trimmed**

PLATE 34



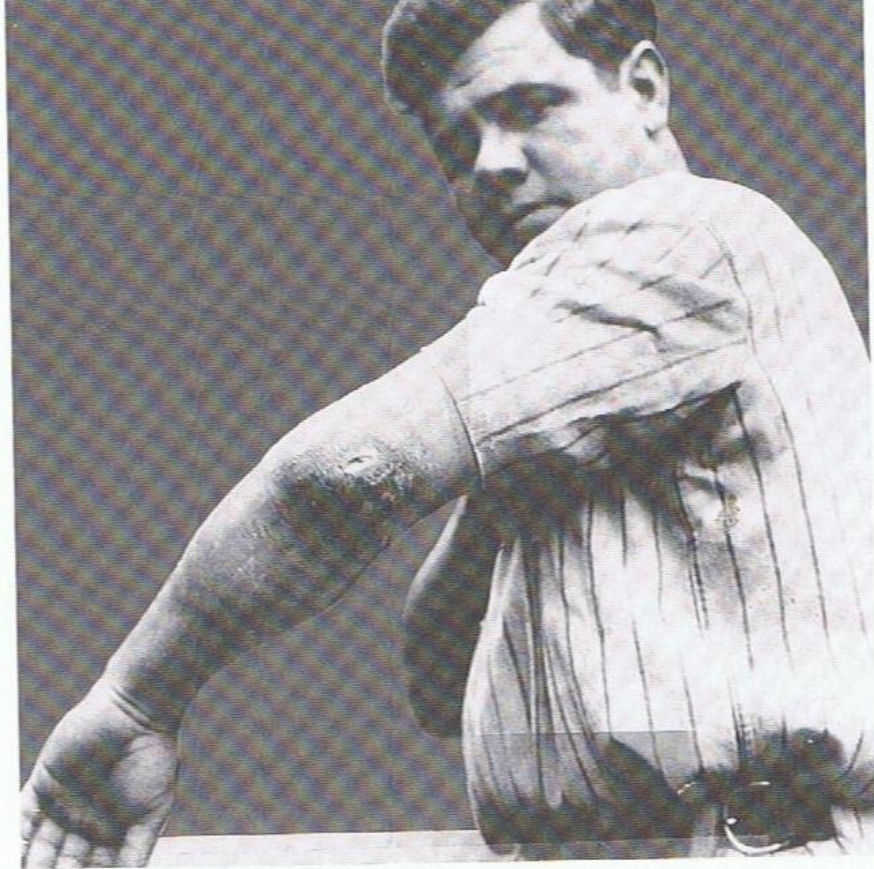
c1921
Base on
Cap Style



-Rough Edges

PLATE 35

**This Sleeve Appears
To Have Been Trimmed**



Babe Ruth challenged sports editor Joe Vila to publish this photo so the public could see the abscess that sidelined him in the last three games of the World Series. Vila chose not to run the picture.

1921

PLATE 36

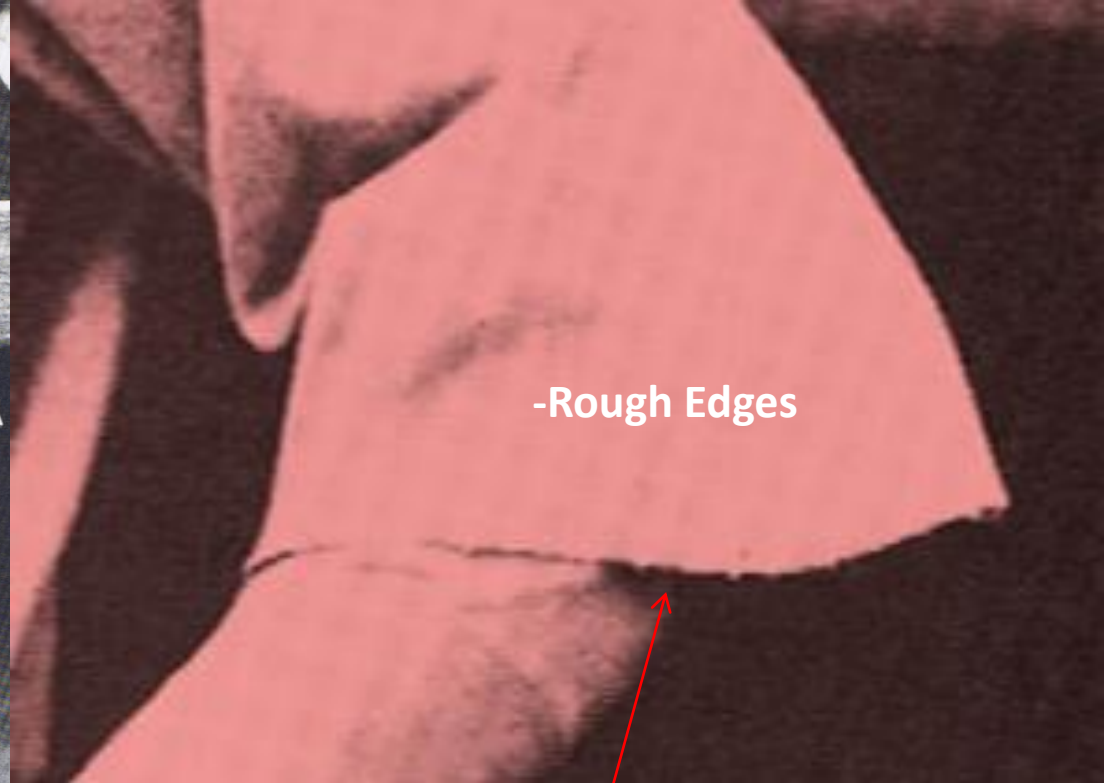
**Sleeves Appear
Cut and Lack a Hem**





1922 World Series

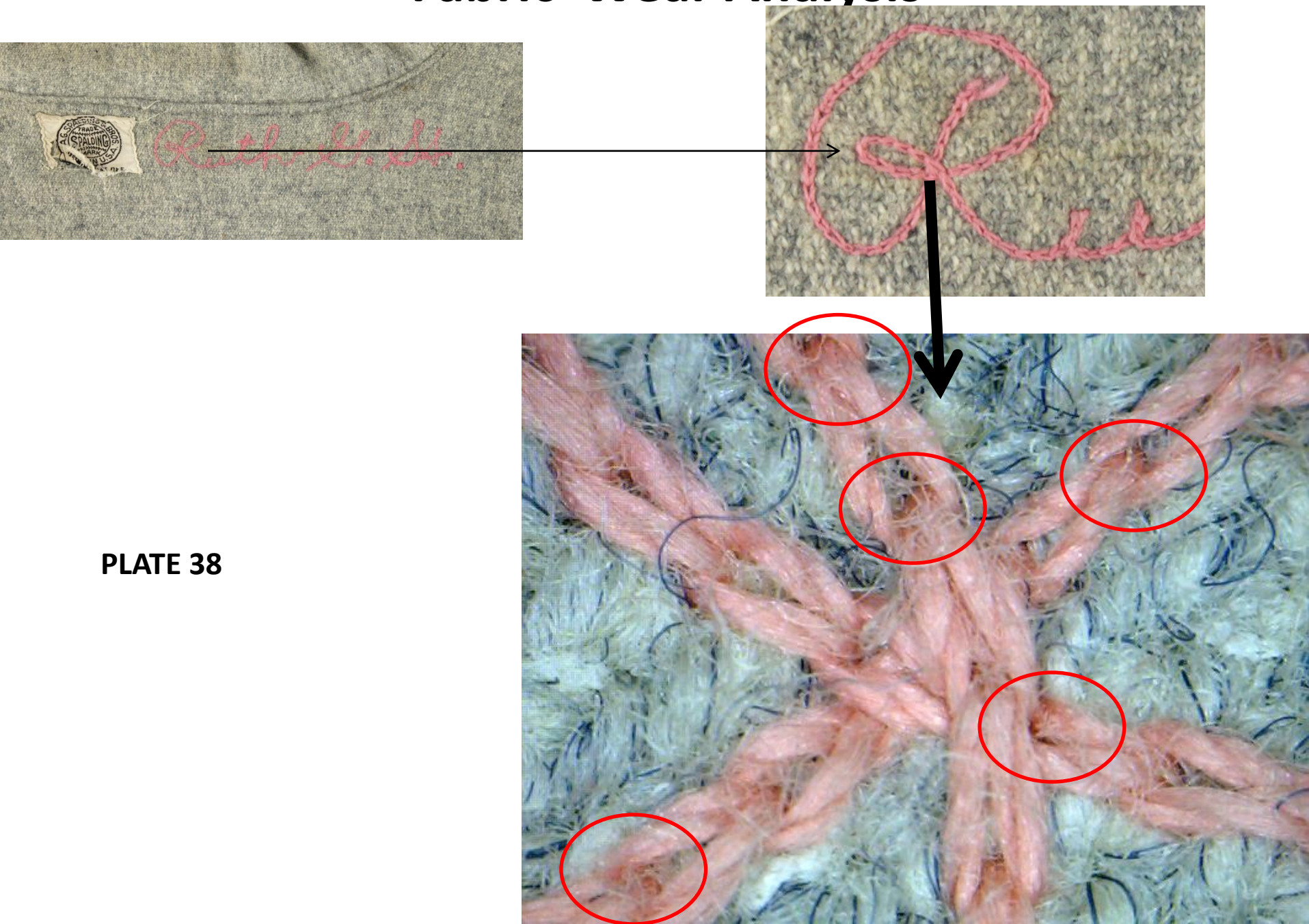
PLATE 37



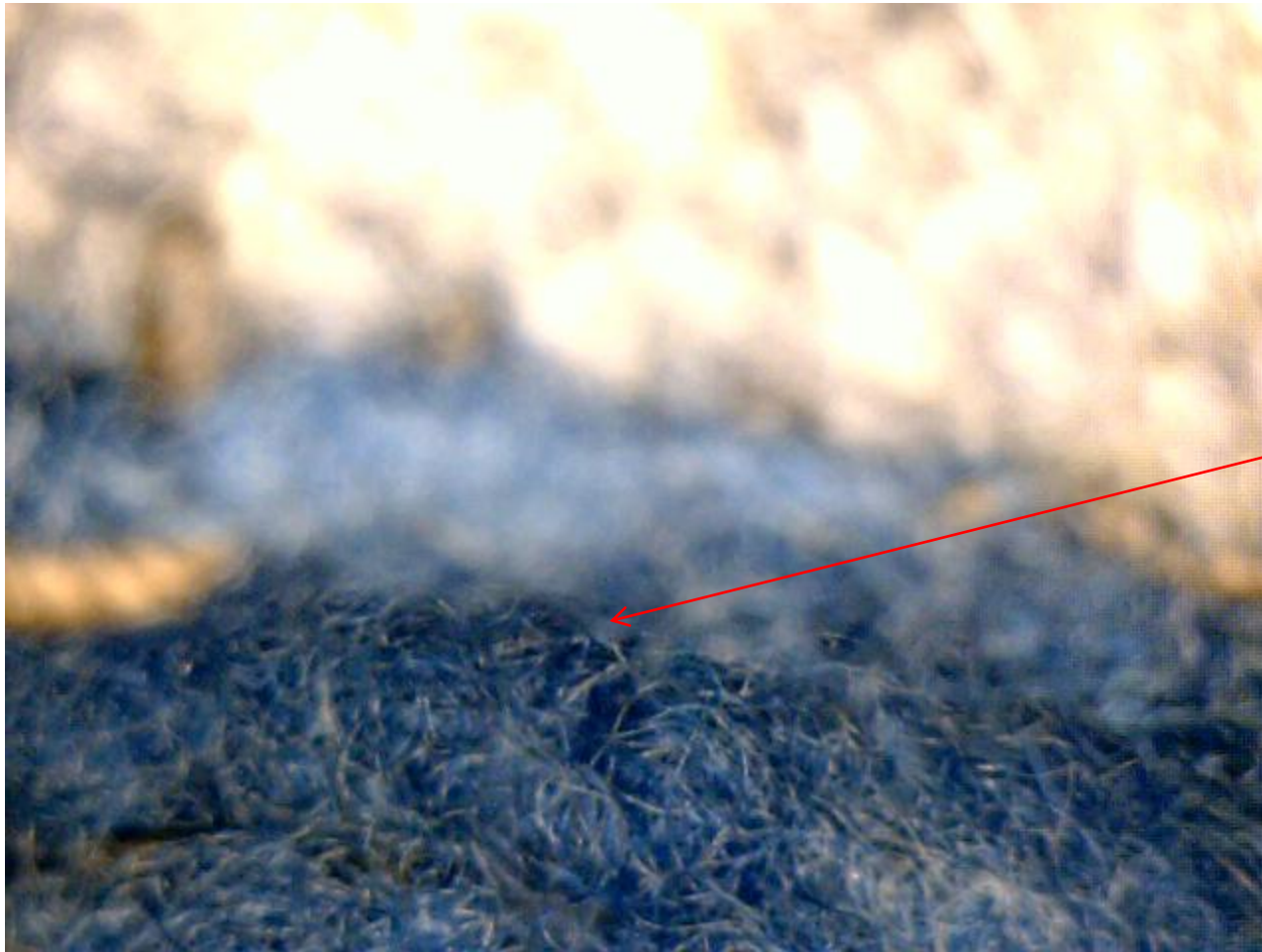
-Rough Edges

This Sleeve Appears
To Have Been Trimmed

Fabric Wear Analysis



Fabric Wear Analysis



Underside of wool felt
is darker.

PLATE 39